

# GREATER DAYTON CONSTRUCTION GROUP

DECEMBER 2011 | NEWSLETTER

## GDCG Hosts Annual Holiday Open House

More than 150 employees, family, and friends celebrated Christmas a little early as Greater Dayton Construction Group hosted its annual Holiday Open House on December 18th. The event, which kickoffs the Holiday Season at GDCG, was hosted on-site for a 3rd consecutive year.



*Party Go-ers / GDCG Employees, Jamie Perkins (wife Teresa also pictured), Ben Cook, Tom Lee and Adam Rose Participated in the Evening's Festivities*

*—Photo Courtesy of Tom Carney*

Warehouse space typically reserved for job resources, shipments, and vehicles, was again transformed by the GDCG production team into a Holiday scene, complete with garland, lighting, and a 20' Christmas tree. Special credit is due to Brian Lambert, Dave Hinchee, Josh Driver, Todd Conley, and Cody Winning along with all those who helped create the party environment.

Kohler Catering and GiGi's Cupcakes again provided food and services for the festivities. The dessert tray proved to be a hit among GDCG employees. As in the past, Kohler Catering delivered on their promise to provide "exceptional service and unparalleled menu selections."

Thanks again to Kohler Catering and Gigi's Cupcakes for their help in making the evening a success.



*Birthday Girl, Jennifer Luckoski and New Employee, Laura Burton Pose for a Smile at the Holiday Open House*

*—Photo Courtesy of Tom Carney*

After indulging in dinner and drinks, the party kicked up a notch with dancing and competitive games of "Kan Jam" – a game tailored for the wide-open spaces in the GDCG warehouse. By popular demand (and as the result of a few *questionable* scoring decisions), below are the "Official" rules of Kan Jam.

"Games are played by two teams consisting of two players. Teammates stand at opposite 'kans' positioned 50 feet apart. Discs (frisbee like) that hit the 'kan' on the fly are worth two points, discs that hit the 'kan' after being deflected by the partner are worth one point, discs that go into the 'kan' after being deflected by the partner are worth three points. Discs that go straight into the 'kan', whether through the slot or the top without being deflected by the partner, are an instant win."

At night's end the Holiday season had begun. Please see related articles on the GDCG White Elephant Christmas Exchange and Holiday Breakfast enclosed, and thanks again to all who made this year's party just a little merrier.

GDCG / OTC hopes its customers, trade partners and employees enjoyed their Holiday Season and have a very happy and prosperous New Year!

**GO ONLINE TO READ THE NEWSLETTER AT :**  
[HTTP://WWW.GDCG.COM/COMPANY-NEWS/COMPANY-NEWSLETTER](http://www.gdcg.com/company-news/company-newsletter)

*\*All party photos are available on the S: Drive; 2011 Data/INS Data/Photos/Xmas 2011*

## GDCG Wins Two Local CotY Awards

Every Fall, the National Association of the Remodeling Industry (NARI) sponsors the its “Contractor of the Year” (CotY) Awards program. This year for GDCG, the renovations for Walker Toyota / Scion car dealership earned the Commercial Exterior award while the Bockelman basement – turned home theatre space – earned the Residential Media Room / Home Theatre award.

For Walker, ACM (Aluminum Composite Material) Panels were used to clad the exterior of the building. New storefront windows and overhead doors were installed. Three colors of ACM panels were used to complement the Toyota branding and signage. Renovations also included, the addition of a 1,015-square-foot space added to the sales floor to house a new vehicle delivery area.



*Walker Toyota's New Building Facade after Renovations  
—Photo Courtesy of Dan Feldkamp, Visual Edge*

At the Bockelman residence, an underutilized basement was turned into a media room / home theatre space. The existing open-joint ceiling was replaced with a wood coffered ceiling, old tile was replaced with high efficiency cork flooring and granite counter tops were used for the island and floating bar tables.



*Updated Kitchenette, with New Granite Island in Bockelman Basement  
—Photo Courtesy of Dan Feldkamp, Visual Edge*

## GDCG Benefit Review

The end of the year is most often when company benefits are analyzed, tweaked and ultimately offered to all full-time Greater Dayton Construction Group Employees. Here is an update of some of the new /current Company benefits:

**Group Healthcare:** Greater Dayton Construction made the switch to United Healthcare for 2012, and is offering a Health Savings Account plan for employees. Participating employees will receive their new United Healthcare cards in the mail within two weeks. Additionally for those who are new to an HSA plan, your applications were sent to Wright Patt Credit Union to establish your personal HSA savings account. You should receive your account ID card in 5 – 7 days and your debit card and or checks in 10 – 15 days. As a thank you, Wright Patt will open your account with a \$5.00 balance and currently offers a 2.5% rate of return on your health savings balance. Payroll will start deducting your elected pre-tax contributions in January. Contribution adjustments can be made every quarter – See Steve Maloy for the paperwork.

**Accident Insurance:** One more reminder for employees enrolled in the Allstate Accident Insurance Plan, make sure to submit your Doctor visits and or accident bills to Allstate. Submit your paperwork for any eligible bills that occurred between November 15, 2011 and December 31, 2011. The process is very simple. Submit to the Allstate Hartville Ohio office; online if possible so they can send you updates on the status of your claim. Steve Maloy can help you with the submittal to get you started.

**ING Retirement Savings Plan (401K):** Don Reynolds from Morgan Stanley / Smith Barney recently held a forum for employees to answer questions on the Company sponsored 401K plan. If you do not currently participate and would like to join, meet with Steve Maloy during the first week in January and he can help get you enrolled. Those of you who are currently enrolled and have not set up your personal online access should get this done. It provides you access to helpful information and allows you to easily change your contribution levels.

**Dental Open Enrollment:** The dental coverage for 2012 will remain with Superior Dental. We will see a very modest increase in the bi-weekly premiums. Open enrollment will start January 3, 2012. Notices will be sent to each employee the first week in January.

**Address, Name and Family Changes:** If you have changed your address or family status please get with HR to complete a new Employee Information Form. This information is important for payroll and benefit providers.



## Ice Damming Prevention For Your Home

With the threat of ice and snow in the near future, preparation and prevention of ice damming is critical for the longevity of your roof. GDCG seeks to provide valuable, updated literature to their employees, and recommends keeping this information in mind when speaking to insurance adjusters and homeowners.

**What is an Ice Dam?:** An ice dam is a build up of ice that forms at the edge of a roof, in the valleys, or in the gutters and prevents melting snow (water) from draining off the roof. The water that backs up behind the dam can leak through the roof into a home and cause damage to walls, ceilings, insulation, and other areas.

**What Causes Ice Dams?:** For ice dams to form, two conditions must exist:

- There must be snow on the roof
- Portions of the roof's outside surface closer to the ridge must be above freezing, while lower surfaces are below freezing

The snow on the roof's surface that is not frozen will melt. As water flows down the roof it reaches the portion that is colder and solidifies. Voila!—an ice dam. The dam grows as it is fed by the melting snow above, allowing water above to back up behind the ice dam and remain a liquid. This water finds cracks and openings in the exterior roof covering and flows into the attic space. From the attic it could flow into exterior walls or through the ceiling insulation and stain the ceiling finish.

**Dealing With Ice Dams:** For immediate action, remove snow from the roof. This eliminates one of the ingredients necessary for the formation of an ice dam. A "roof rake" and push broom can be used to remove snow, but may damage the roofing materials. In an emergency situation where water is flowing into the house structure, making channels through the ice dam allows the water behind the dam to drain off the roof. Hosing with tap water on a warm day will do this job. Work upward from the lower edge of the dam. The channel will become ineffective within days and is only a temporary solution to ice dam damage.

For long-term action, make your ceiling air tight so no warm, moist air can flow from the house into the attic space. Nonuniform roof surface temperatures lead to ice dams. After sealing air leakage paths between the house and attic space, consider increasing the ceiling/roof insulation to cut down on heat loss by conduction.

Additional information on how to protect you home can be found at: [www.gdcg.com/resources-links-](http://www.gdcg.com/resources-links-)

## Woods Residence to Undergo Extensive Remodel

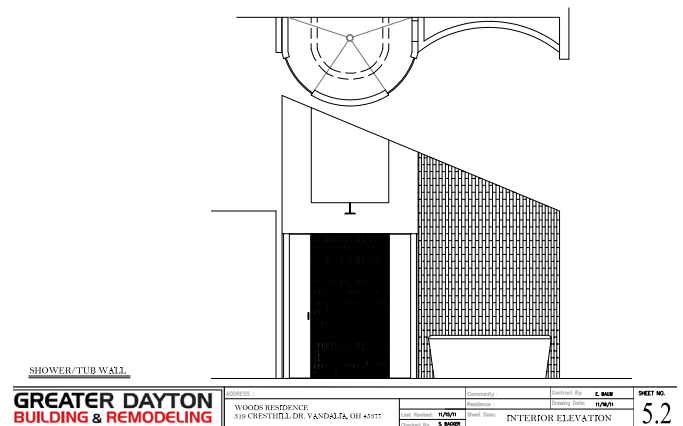
Connie Woods came to Greater Dayton Building & Remodeling with a vision of an open concept Master Suite to match the already contemporary design of her home. This remodeling plan will consist of a second-level addition as well as a lower-level expansion.

For the second-level addition, walls will be removed and ceilings will be vaulted to provide more light for the open space. Luxurious finishes will be used to create new focal points for the area.



*Contemporary Selection Samples for Wood's Master Suite  
-Selection Images Courtesy of Jennifer Luckoski*

Graceful curved walls with glass /stone tile will surround the shower and freestanding limestone tub. A walk-in closet, dressing area and vanity will complete the new upper level. The luxury finishes will extend outdoors onto a slate sitting area with ledger stone fireplace.



*Master Bathroom Shower and Bath Elevation Floor Plan  
-Rendering Courtesy of Erica Baum*

### PROJECT AT A GLANCE:

Location: 319 Cresthill Dr. Vandalia, Ohio

Projected Completion Date: March 2012

Superintendent: Dave Makintosh

## New Addition: Laura Burton

The Greater Dayton Construction Group is happy to welcome one of its newest employees, Laura Burton.

Laura is a graduate of Bellbrook High School and has also earned an Associate Degree from Sinclair Community College in the field of Visual Communications. Laura will be primarily serving as a production coordinator.

In her free time, Laura enjoys trail riding, boat surfing and hiking. She loves horse racing and makes it a priority to attend the Kentucky Derby every year.

Welcome to the GDCG team, Laura!

## New Addition: Ciera Wilson

GDCG is also happy to welcome another one of its newest additions, Ciera Wilson. Ciera came to GDCG in early July (during office renovations) and has recently been hired on as a full-time employee, serving as a company-wide administrative assistant.

Ciera is a 2010 graduate of Xenia High School and currently attends Sinclair Community College where she is studying Business Management. She is also pursuing a degree in Interior Design. In Ciera's free time she enjoys playing volleyball and spending time with her family. She is eagerly awaiting the arrival of a second nephew due in February – born to brother Dave Wilson, also a GDCG employee.

Welcome to the GDCG team, Ciera!

### December/ January Birthdays & Milestones

#### December Birthdays

Brian Lambert 12/13  
Adam Rose 12/14  
Jennifer Luckoski 12/18  
Tommy Lee 12/24  
Earl Wyatt 12/29

#### January Birthdays

Jerry Wurst 1/1  
Steve Maloy 1/6  
Tim Greany 1/19

#### January Milestones

Bill Hibner - 1 Year  
Jane Feltner - 1 Year

## GDCG Holds White Elephant Gift Exchange / Holiday Breakfast

To ring in the Holiday Weekend, approximately 30 of GDCG's employees participated in the annual White Elephant gift exchange. All participants had the option to unwrap a new gift or "steal" a previously opened gift from another player. Thanks to all who participated in good spirit!

In addition to the gift exchange, every year during the Christmas Holiday GDCG holds a Holiday Breakfast to thank employees for their year of hard work and dedicated service. Milestone certificates were handed out to Gene Tartell and Jeff Goldman for 15 years, Kelly Fields for 10 years, and to Joe Moore and Ben Patrick for 5 years. Once again, GDCG would like to thank all of its employees for a great 2011!

## EPA's Tips for Staying Warm While Lowering Bills

The EPA provides a list of ways to improve your home's comfort while saving energy and money. By using energy efficiently in your home, you can make a difference by preventing air pollution from power plants. The following is a sample of some simple recommendations from the U.S. Environmental Protection Agency:

- 1. Know the Facts** - The average family spends \$1,400 a year on energy bills, with nearly half of that spent on heating and cooling. Energy-efficient heating and cooling equipment, sized and installed correctly, with properly sealed ducts, can save homeowners as much as 20 percent on their annual energy costs.
- 2. Keep it Clean** - A dirty air filter can increase your energy costs and lead to early equipment failure. Clean or change the air filter in your heating and cooling system monthly. Some filters only need to be changed every 3 months. Also, have your equipment checked seasonally to make sure it's operating efficiently and safely - check-ups can identify problems early. Dirt and neglect are the #1 causes of system failure.
- 3. Tighten Your Ducts** - If you have a forced air furnace or heat pump, then a duct system is responsible for circulating warm air throughout your home. Leaky ducts can reduce your system's overall efficiency by 20 percent. Sealing your ducts can save up to \$140 annually on energy bills and help you consistently heat every room.

These simple tips are good for your wallet and the environment, to see the whole article visit: <http://www.epa.gov/naturalevents/fightfrost.html>